

```
Blink

// Pin 13 has an LED connected on most Arduino boards.
// give it a name:
int led = 13;

// the setup routine runs once when you press reset:
void setup() {
  // initialize the digital pin as an output.
  pinMode(led, OUTPUT);
}

// the loop routine runs over and over again forever:
void loop() {
  digitalWrite(led, HIGH); // turn the LED on (HIGH is the voltage level)
  delay(1000);             // wait for a second
  digitalWrite(led, LOW);  // turn the LED off by making the voltage LOW
  delay(1000);             // wait for a second
}

Done compiling.

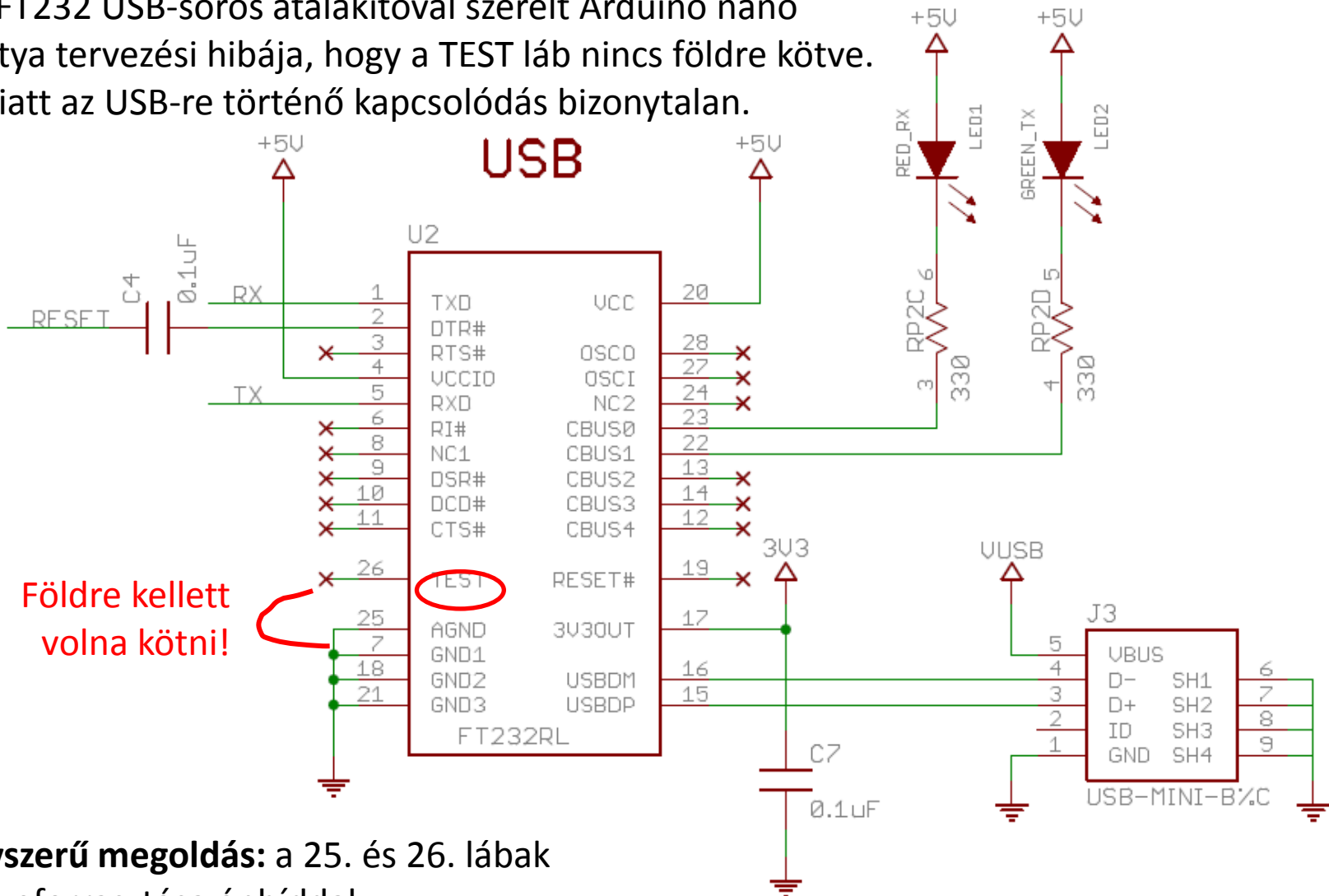
Binary sketch size: 1,084 bytes (of a 30,720 byte maximum)
Arduino Nano w/ ATmega328 on COM16
```



Ez most nem programozás: Az Arduino nano v3.0 javítása

Arduino nano v3.0

Az FT232 USB-soros átalakítóval szerelt Arduino nano kártya tervezési hibája, hogy a TEST láb nincs földre kötve. Emiatt az USB-re történő kapcsolódás bizonytalan.




Egyszerű megoldás: a 25. és 26. lábak összeforrasztása ónhíddal

www.arduino.cc/en/uploads/Main/ArduinoNano30Schematic.pdf

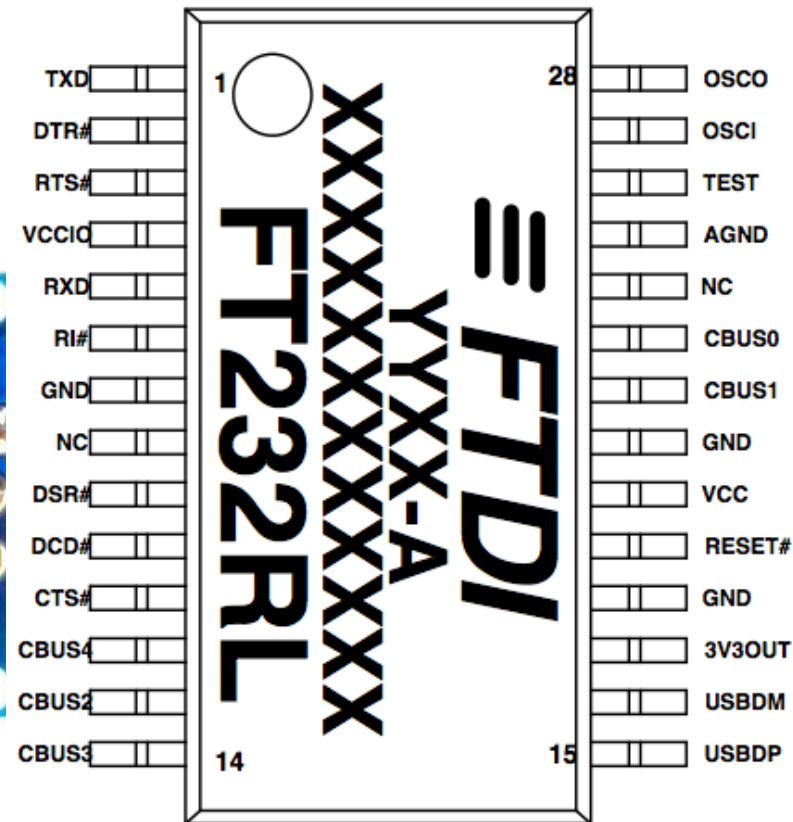
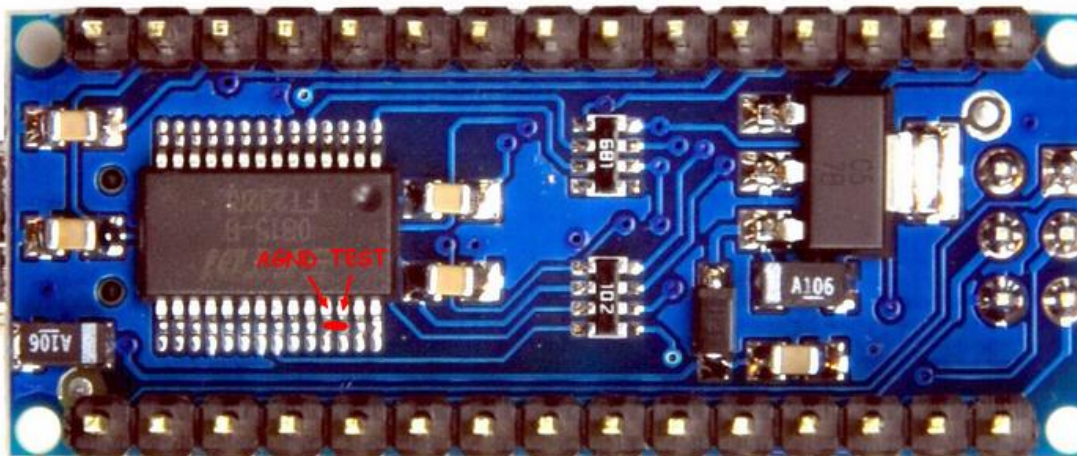
How to fix moody Arduino nano

Részlet az FTDI FT232 adatlapból:

26	TEST	Input	Puts the device into IC test mode. <u>Must be tied to GND</u> for normal operation, otherwise the device will appear to fail.
----	------	-------	---

 **USB device not recognized**
The last USB device you connected to this computer malfunctioned, and Windows does not recognize it.

A hibajelenség és a megoldás.



Felhasznált forrás:

<https://ketturi.kapsi.fi/2014/04/how-to-fix-moody-arduino-nano/>

Emlékeztető: Arduino nano v3.0



NANO PINOUT

The power sum for each pin's group should not exceed 100mA

